

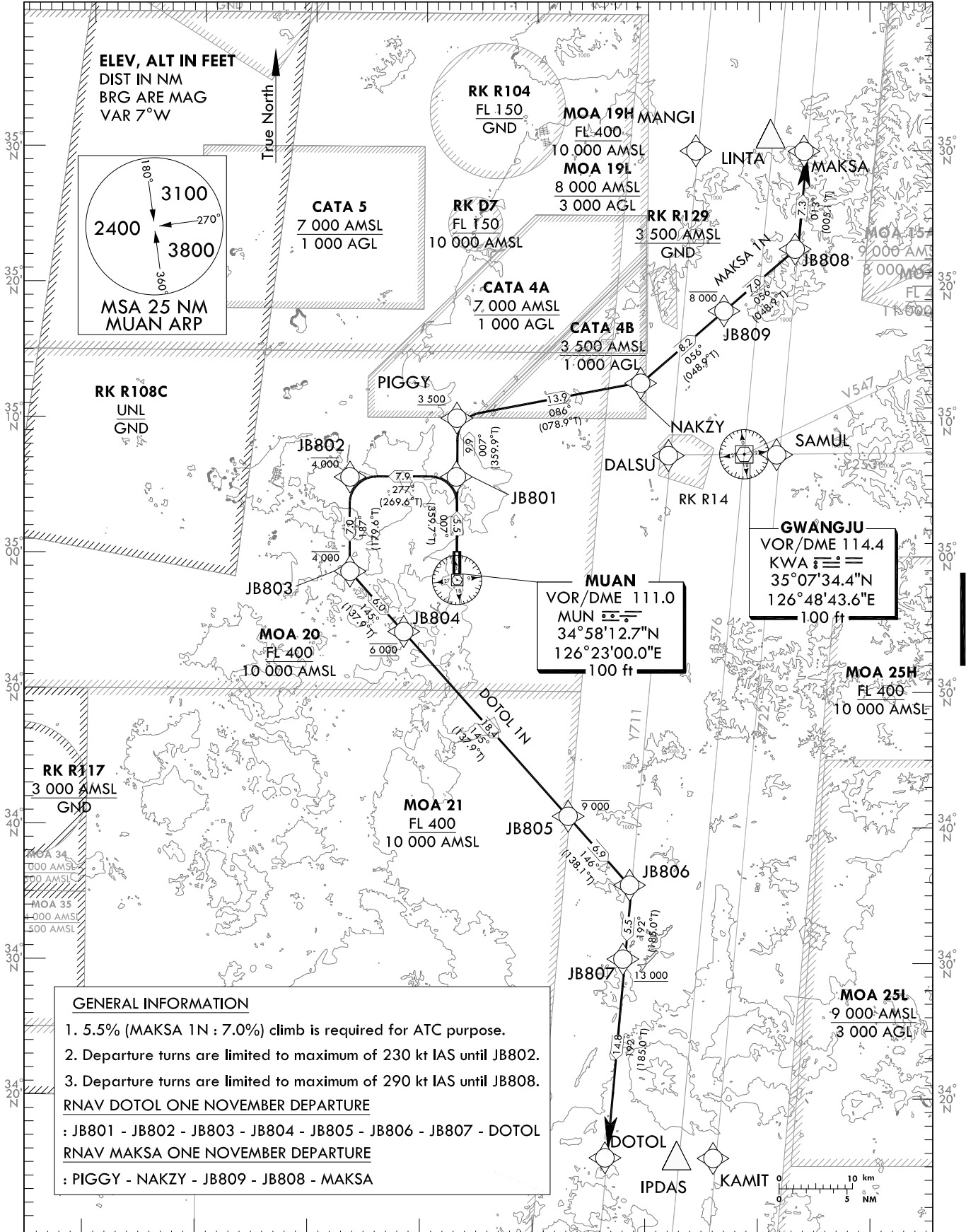
STANDARD DEPARTURE CHART
INSTRUMENT(SID) - ICAO

TRANSITION ALT 14 000
TRANSITION LVL FL 140

| | |
|-------------|--------|
| GWANGJU DEP | 124.0 |
| | 347.2 |
| MUAN TWR | 118.25 |
| | 118.85 |

MUAN/Muan Intl(RKJB)
RWY 01
RNAV MAKSA 1N
RNAV DOTOL 1N

Note : Departure under ICAO Flight Procedures.



GENERAL INFORMATION

- 5.5% (MAKSA 1N : 7.0%) climb is required for ATC purpose.
- Departure turns are limited to maximum of 230 kt IAS until JB802.
- Departure turns are limited to maximum of 290 kt IAS until JB808.

RNAV DOTOL ONE NOVEMBER DEPARTURE
: JB801 - JB802 - JB803 - JB804 - JB805 - JB806 - JB807 - DOTOL

RNAV MAKSA ONE NOVEMBER DEPARTURE
: PIGGY - NAKZY - JB809 - JB808 - MAKSA

NOTE

- RNAV 1 operation
- GNSS required
- ATS surveillance service required

Change : Amended coordinate format.

MUAN/Muan Intl(RKJB)
RWY 01

RNAV MAKSA 1N, RNAV DOTOL 1N

AERONAUTICAL DATA TABULATION

Standard Instrument Departure Procedure Coding Tables

| RNAV MAKSA 1N | | | | | | | | | | | | |
|---------------|-----------------|---------------------|----------|------------------------|---------------|----------------|---------------|------------|----------------------------|---------|--------------------------|---------|
| Serial Number | Path Descriptor | Waypoint Identifier | Fly-over | Course/Track °M(°T) | Distance (NM) | Turn direction | Altitude (ft) | Speed (kt) | Coordinates | VPA/TCH | Navigation specification | Remarks |
| 001 | CF | PIGGY | - | 007(359.9) | 9.9 | - | +3 500 | -290 | 35°10'13.9"N 126°22'56.6"E | - | RNAV 1 | - |
| 002 | TF | NAKZY | - | 086(078.9) | 13.9 | - | -6 000 | -290 | 35°12'53.8"N 126°39'34.6"E | - | RNAV 1 | - |
| 003 | TF | JB809 | - | 056(048.9) | 8.2 | - | -8 000 | -290 | 35°18'17.2"N 126°47'06.8"E | - | RNAV 1 | - |
| 004 | TF | JB808 | - | 056(048.9) | 7.0 | - | - | -290 | 35°22'53.4"N 126°53'34.1"E | - | RNAV 1 | - |
| 005 | TF | MAKSA | - | 013(005.1) | 7.3 | - | - | - | 35°30'11.3"N 126°54'22.0"E | - | RNAV 1 | - |

| RNAV DOTOL 1N | | | | | | | | | | | | |
|---------------|-----------------|---------------------|----------|------------------------|---------------|----------------|---------------|------------|----------------------------|---------|--------------------------|---------|
| Serial Number | Path Descriptor | Waypoint Identifier | Fly-over | Course/Track °M(°T) | Distance (NM) | Turn direction | Altitude (ft) | Speed (kt) | Coordinates | VPA/TCH | Navigation specification | Remarks |
| 001 | CF | JB801 | - | 007(359.7) | 5.5 | - | - | -230 | 35°05'51.5"N 126°22'55.5"E | - | RNAV 1 | - |
| 002 | TF | JB802 | - | 277(269.6) | 7.9 | - | -4 000 | -230 | 35°05'48.2"N 126°13'17.8"E | - | RNAV 1 | - |
| 003 | TF | JB803 | - | 187(179.6) | 7.0 | - | -4 000 | - | 34°58'47.5"N 126°13'21.8"E | - | RNAV 1 | - |
| 004 | TF | JB804 | - | 145(137.9) | 6.0 | - | @6 000 | - | 34°54'20.0"N 126°18'15.4"E | - | RNAV 1 | - |
| 005 | TF | JB805 | - | 145(137.9) | 18.4 | - | -9 000 | - | 34°40'39.6"N 126°33'10.9"E | - | RNAV 1 | - |
| 006 | TF | JB806 | - | 146(138.1) | 6.9 | - | - | - | 34°35'32.9"N 126°38'43.9"E | - | RNAV 1 | - |
| 007 | TF | JB807 | - | 192(185.0) | 5.5 | - | +13 000 | - | 34°30'02.7"N 126°38'09.3"E | - | RNAV 1 | - |
| 008 | TF | DOTOL | - | 192(185.0) | 14.8 | - | - | - | 34°15'15.4"N 126°36'36.6"E | - | RNAV 1 | - |

Change : Amended coordinate format.

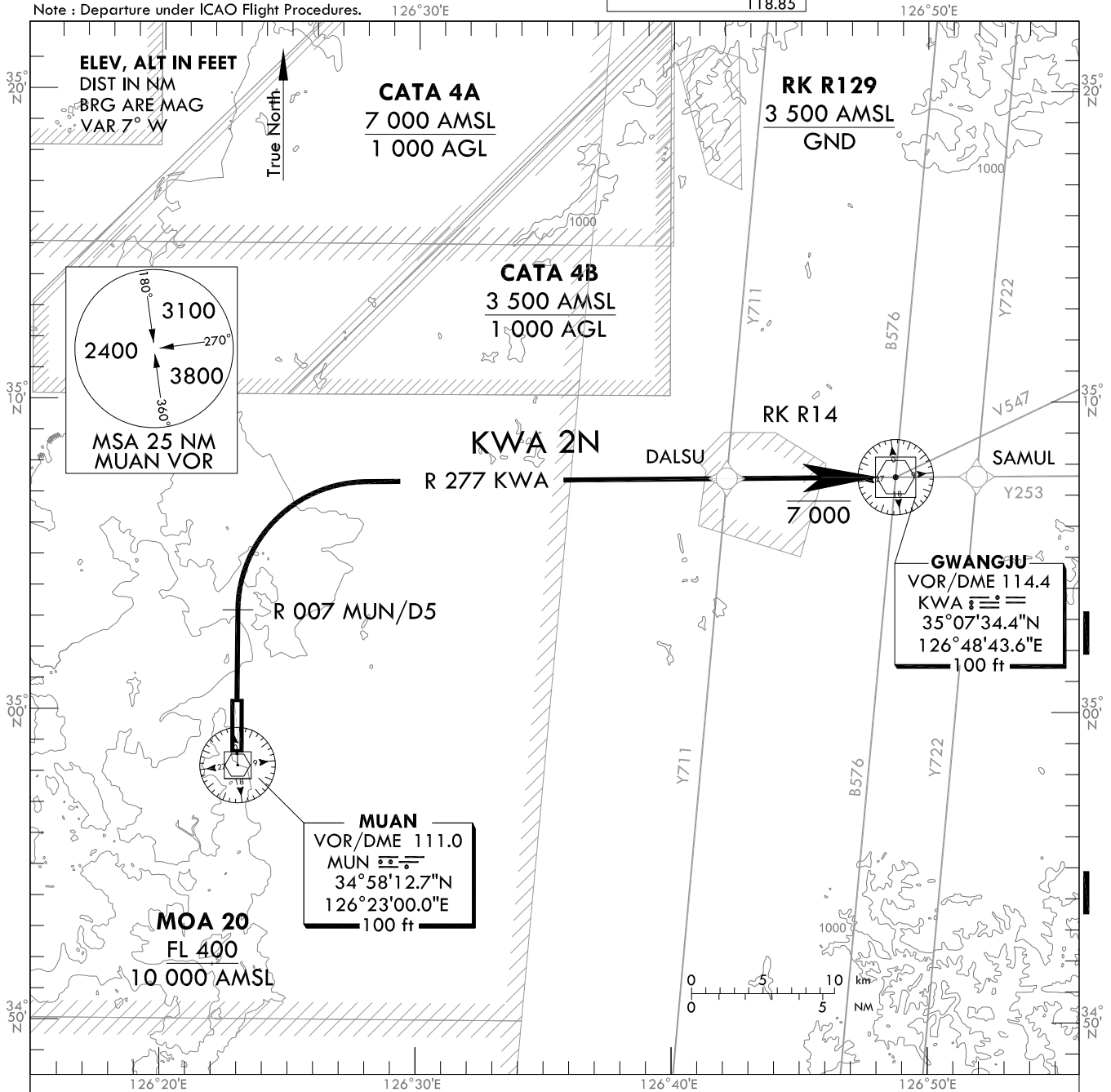
**STANDARD DEPARTURE CHART
INSTRUMENT(SID) - ICAO**

TRANSITION ALT 14 000
TRANSITION LVL FL 140

GWANGJU DEP 124.0
347.2
MUAN TWR 118.25
118.85

**MUAN/Muan Intl(RKJB)
RWY 01
KWA 2N**

Note : Departure under ICAO Flight Procedures.



KWA TWO NOVEMBER DEPARTURE

Climb on R 007 MUN. At R 007 MUN/D5, Turn Right to intercept R 277 KWA,
Join B576 or V543 airway as assigned.

- * Cross KWA at or below 7 000 ft unless otherwise directed by ATC.
- * Minimum Climb gradient 5.6% until joining the assigned airway for ATC purpose.
- * Departure turns are limited to maximum of 240 kt IAS until KWA.

Change : Amended coordinate format.

INTENTIONALLY

LEFT

BLANK

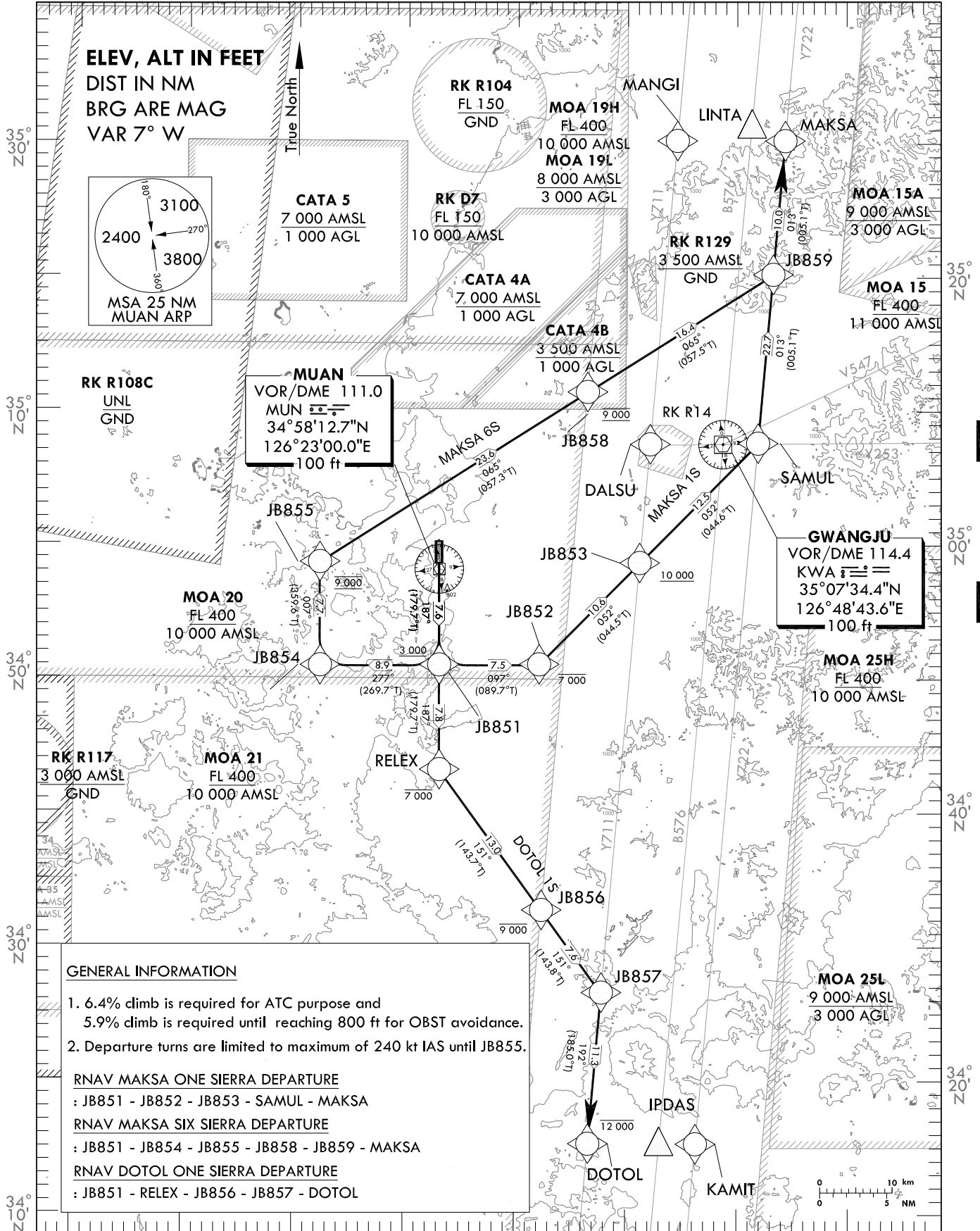
STANDARD DEPARTURE CHART
INSTRUMENT(SID) - ICAO

TRANSITION ALT 14 000
TRANSITION LVL FL 140

| | |
|-------------|--------|
| GWANGJU DEP | 124.0 |
| | 347.2 |
| MUAN TWR | 118.25 |
| | 118.85 |

MUAN/Muan Intl(RKJB)
RWY 19
RNAV MAKSA 1S
RNAV MAKSA 6S
RNAV DOTOL 1S

Note : Departure under ICAO Flight Procedures.



NOTE
1. RNAV 1 operation
2. GNSS required
3. ATS surveillance service required

Change : Amended coordinate format.

MUAN/Muan Intl(RKJB)
RWY 19
RNAV MAKSA 1S, RNAV MAKSA 6S
RNAV DOTOL 1S

AERONAUTICAL DATA TABULATION

Standard Instrument Departure Procedure Coding Tables

| Serial Number | Path Descriptor | Waypoint Identifier | Fly-over | Course/Track °/M(T) | Distance (NM) | Turn direction | Altitude (ft) | Speed (kt) | Coordinates | VPA/RDH | Navigation specification | Remarks |
|---------------|-----------------|---------------------|----------|------------------------|---------------|----------------|---------------|------------|----------------------------|---------|--------------------------|---------|
| 001 | CF | JB851 | - | 187(179.7) | 7.6 | - | +3 000 | -240 | 34°51'00.9"N 126°23'01.4"E | - | RNAV 1 | - |
| 002 | TF | JB852 | - | 097(089.7) | 7.5 | - | -7 000 | - | 34°51'03.2"N 126°32'04.9"E | - | RNAV 1 | - |
| 003 | TF | JB853 | - | 052(044.5) | 10.6 | - | +10 000 | - | 34°58'39.3"N 126°41'10.0"E | - | RNAV 1 | - |
| 004 | TF | SAMUL | - | 052(044.6) | 12.5 | - | - | - | 35°07'35.5"N 126°51'54.4"E | - | RNAV 1 | - |
| 005 | TF | MAKSA | - | 013(005.1) | 22.7 | - | - | - | 35°30'11.3"N 126°54'22.0"E | - | RNAV 1 | - |

| Serial Number | Path Descriptor | Waypoint Identifier | Fly-over | Course/Track °/M(T) | Distance (NM) | Turn direction | Altitude (ft) | Speed (kt) | Coordinates | VPA/RDH | Navigation specification | Remarks |
|---------------|-----------------|---------------------|----------|------------------------|---------------|----------------|---------------|------------|----------------------------|---------|--------------------------|---------|
| 001 | CF | JB851 | - | 187(179.7) | 7.6 | - | +3 000 | -240 | 34°51'00.9"N 126°23'01.4"E | - | RNAV 1 | - |
| 002 | TF | JB854 | - | 277(269.7) | 8.9 | - | - | -240 | 34°50'57.7"N 126°12'12.6"E | - | RNAV 1 | - |
| 003 | TF | JB855 | - | 007(359.6) | 7.7 | - | @ 9 000 | -240 | 34°58'40.4"N 126°12'08.7"E | - | RNAV 1 | - |
| 004 | TF | JB858 | - | 065(057.3) | 23.6 | - | @ 9 000 | - | 35°11'25.3"N 126°36'24.2"E | - | RNAV 1 | - |
| 005 | TF | JB859 | - | 065(057.5) | 16.4 | - | - | - | 35°20'12.1"N 126°53'16.5"E | - | RNAV 1 | - |
| 006 | TF | MAKSA | - | 013(005.1) | 10.0 | - | - | - | 35°30'11.3"N 126°54'22.0"E | - | RNAV 1 | - |

| Serial Number | Path Descriptor | Waypoint Identifier | Fly-over | Course/Track °/M(T) | Distance (NM) | Turn direction | Altitude (ft) | Speed (kt) | Coordinates | VPA/RDH | Navigation specification | Remarks |
|---------------|-----------------|---------------------|----------|------------------------|---------------|----------------|---------------|------------|----------------------------|---------|--------------------------|---------|
| 001 | CF | JB851 | - | 187(179.7) | 7.6 | - | +3 000 | - | 34°51'00.9"N 126°23'01.4"E | - | RNAV 1 | - |
| 002 | TF | RELEX | - | 187(179.7) | 7.8 | - | -7 000 | - | 34°43'11.2"N 126°23'04.3"E | - | RNAV 1 | - |
| 003 | TF | JB856 | - | 151(143.7) | 13.0 | - | -9 000 | - | 34°32'42.2"N 126°32'21.6"E | - | RNAV 1 | - |
| 004 | TF | JB857 | - | 151(143.8) | 7.6 | - | - | - | 34°26'33.0"N 126°37'47.3"E | - | RNAV 1 | - |
| 005 | TF | DOTOL | - | 192(185.0) | 11.3 | - | -12 000 | - | 34°15'15.4"N 126°36'36.6"E | - | RNAV 1 | - |

Change : Amended coordinate format.

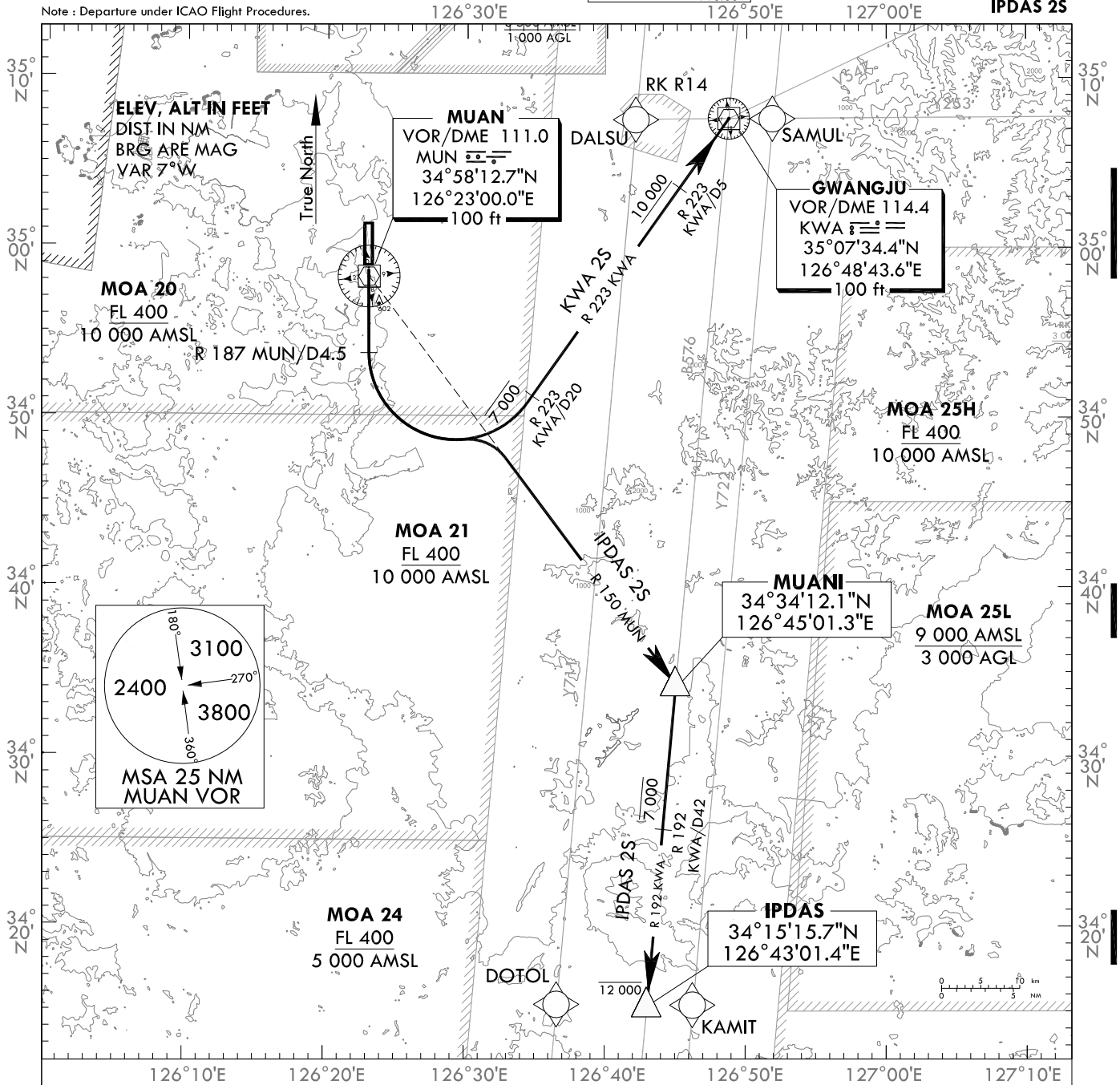
STANDARD DEPARTURE CHART
INSTRUMENT(SID) - ICAO

TRANSITION ALT 14 000
TRANSITION LVL FL 140

| | |
|-------------|--------|
| GWANGJU DEP | 124.0 |
| | 347.2 |
| MUAN TWR | 118.25 |
| | 118.85 |

MUAN/Muan Intl(RKJB)
RWY 19
KWA 2S
IPDAS 2S

Note : Departure under ICAO Flight Procedures.



KWA TWO SIERRA DEPARTURE

Climb on R 187 MUN. At R 187 MUN/D4.5, Turn Left to intercept R 223 KWA,
Join B576 or V543 airway as assigned.

- * Minimum 5.9% Climb is required until reaching 800 ft for OBST avoidance and 10 000 ft for ATC purpose.
- * Cross R 223 KWA/D20 at or below 7 000 ft and at or above 10 000 ft until R 223 KWA/D5 unless otherwise directed by ATC.

IPDAS TWO SIERRA DEPARTURE

Climb on R 187 MUN. At R 187 MUN/D4.5, Turn Left to intercept R 150 MUN to MUANI then IPDAS,
Join B576 airway as assigned.

- * Minimum 5.9% Climb is required until reaching 800 ft for OBST avoidance.
- * Cross R 192 KWA/D42 at or below 7 000 ft and at or below 12 000 ft until IPDAS unless otherwise directed by ATC.

Change : Amended coordinate format.

INTENTIONALLY

LEFT

BLANK